

Tablet PC for Teaching

Usability Evaluation and Redesign

Devin Sabo
Ansel Sermersheim
Tyler Vodak



Project Overview

- Determine usability level of tablet PC as a lecture tool for professors.
- Devised set of activities we thought professor would encounter when using the tablet.
- Based on collected data, developed set of recommended design changes to optimize tablet as a teaching tool.



Tasks of Interest

- As basis of data collection, came up with set of tasks professor would encounter with tablet:
 - Tasks include:
 - Remove stylus from tablet PC
 - Draw and erase notes from screen
 - Change settings of stylus (color, thickness, type)
 - Create a new slide with stylus
 - Access the right-click menu with stylus
 - Holding tablet during a lecture
-
-

Data Collection Scheme

- Conducted experiment with live participants acting as professors.
 - Participants performed a list of common tasks associated with a professor presenting a lecture to a class.
 - Each participant completed survey that stated their opinion on difficulty of performing tasks
 - Observations were recorded by the researchers on separate forms to get better idea of user's mental model of tablet
 - Wanted to know what aspects of tablet interfered with usability
-
-

Data Collection

- Data for tablet PC redesign came from 2 sources
 - Class participants for assignment 3
 - Team member participants with other selected persons
- Surveys for both groups have identical questions, but team more thorough usability evaluation
- Results of study:
 - (NOTE: If its possible to put any data in this space, we should show something)



Major Tablet PC Hardware Issues

- Weight (4.8 lb)
 - Current tablets range from 2.8 – 3.8 lb
 - Stylus Design
 - Lack of right-click button
 - Location of stylus and its EJECT button
 - Poor design of the eraser
 - Cable Placement
 - Location of the Power Button
 - Friction between the stylus and the screen
-
-



Figure 1: The original inside view of the tc4200



Figure 2: The modified inside view of the tc4200



Figure 3: The original stylus design for the tc4200

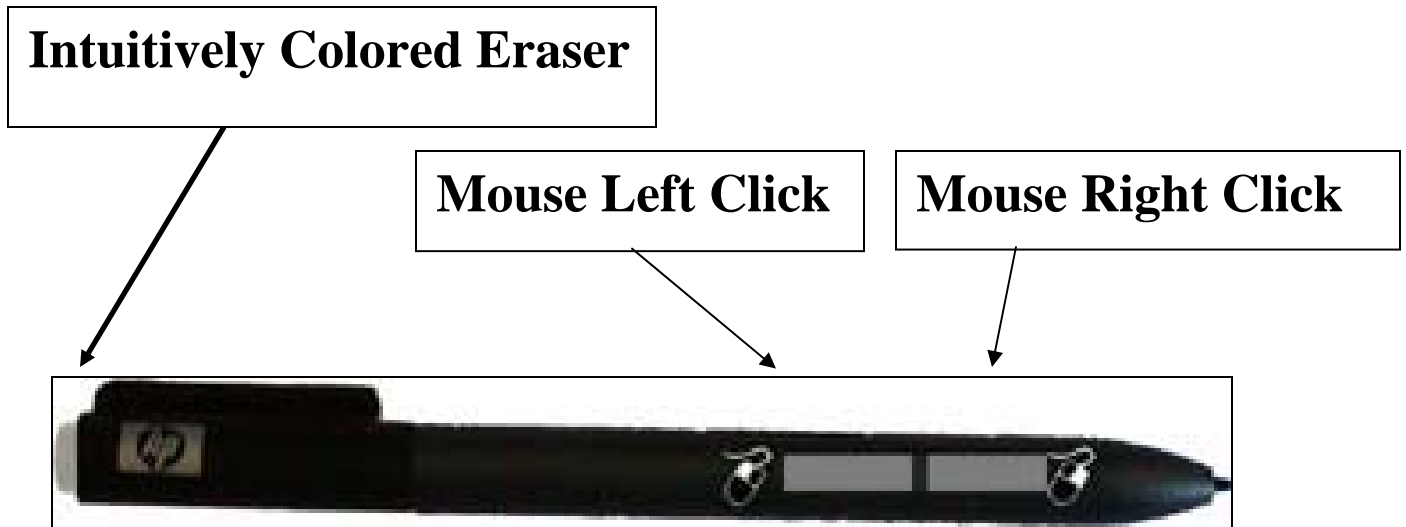


Figure 4: The modified stylus design with added mouse buttons and edited eraser color.

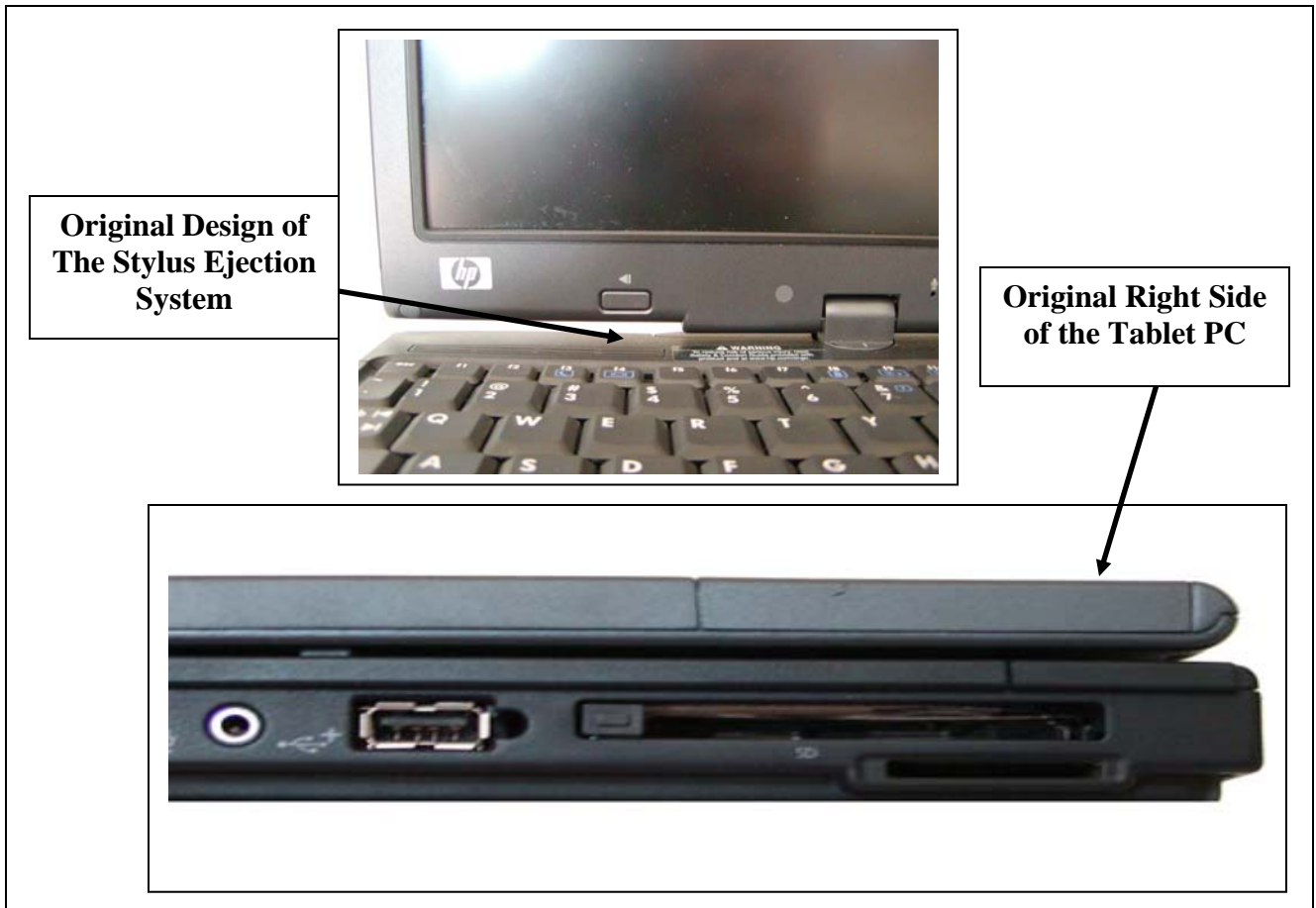


Figure 5: The original location of the stylus port and its ejection system.

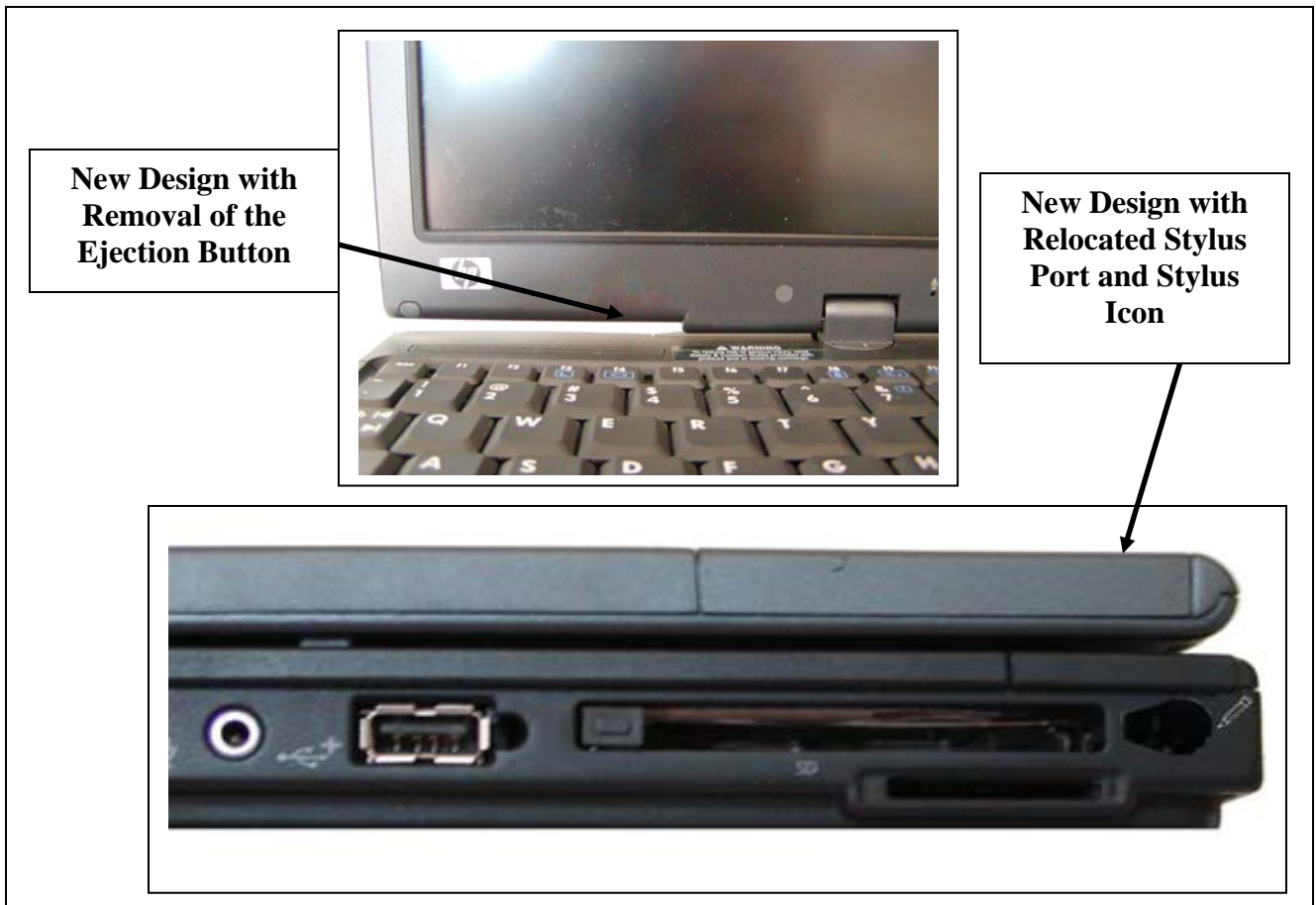


Figure 6: The modified location of the stylus port and its revised ejection system.

Figure 6: The original view of the left side of the tc4200

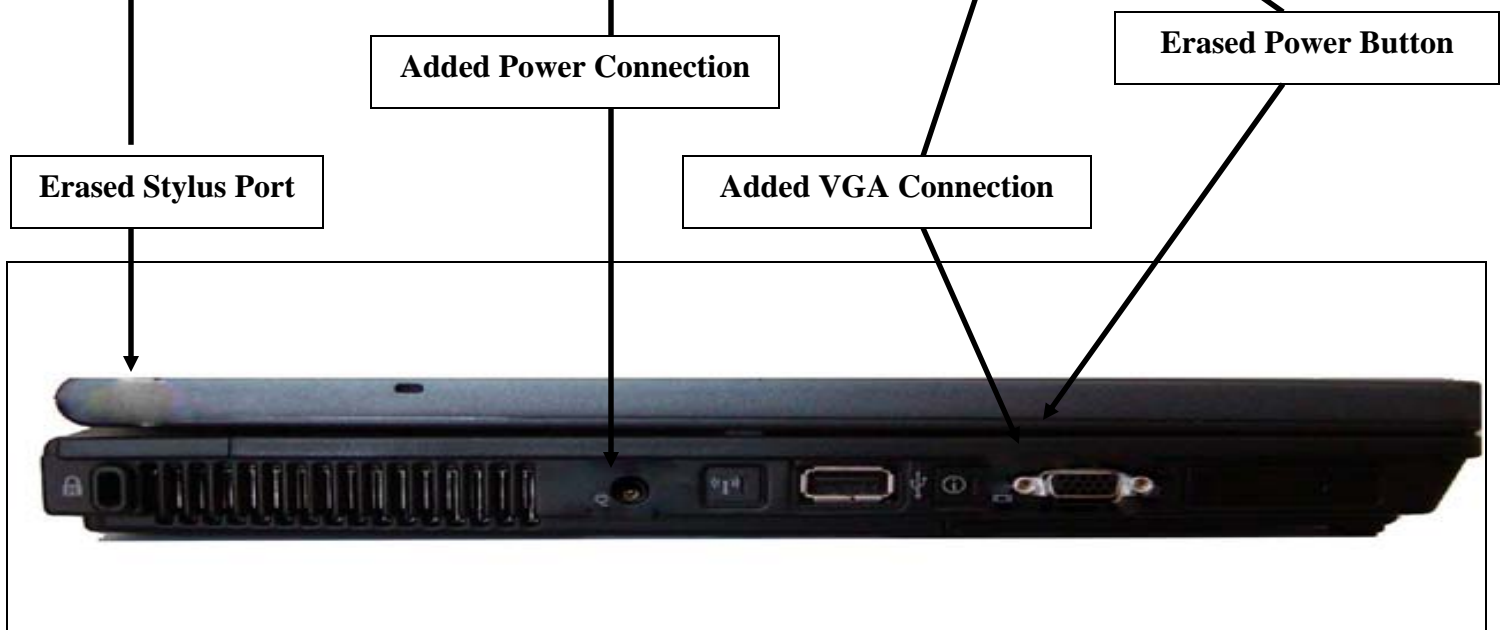
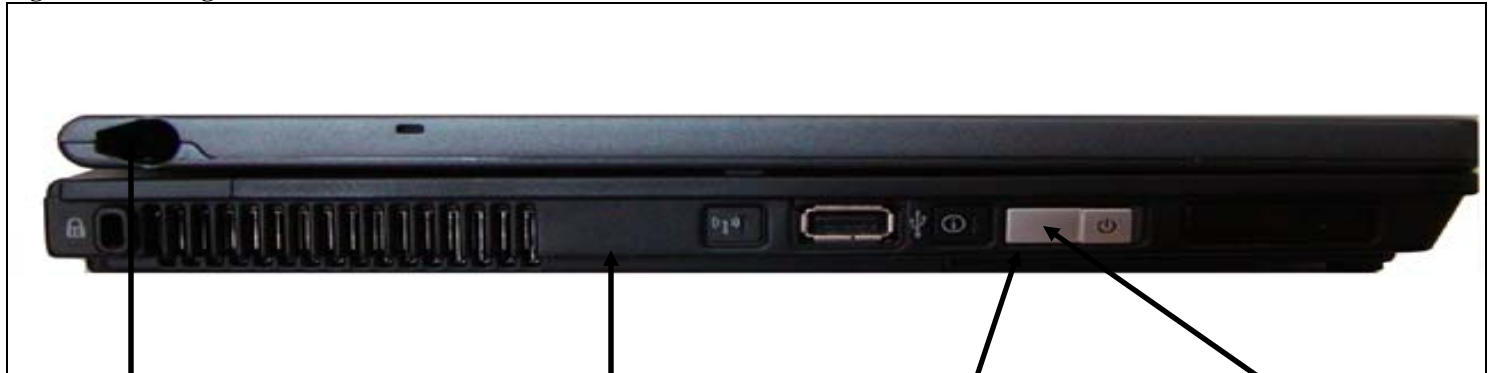


Figure 7: The modified view of the left side of the tc4200 with the added VGA connection and power connection and deleted power button.

Major Tablet PC Software Issues

- Display Orientation
 - User can only hold the tablet in one orientation
 - PowerPoint Issues
 - Writing text with the stylus
 - Confusing icon for entering text with the stylus
 - Problems using a dual-monitor setup for presentations
-
-

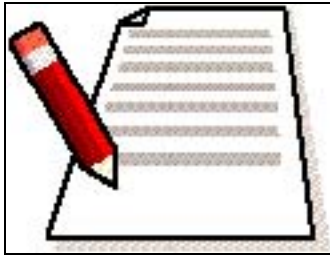



Figure 11: This clickable icon would appear each time the user could insert text with the stylus.



Basic Math 101

Thursday February 22, 2007

Today's Topics:

- numbers
- operators
- equals

Figure 12: The floating stylus menu would appear on a professor's tablet PC, but would be hidden from view on a projector.

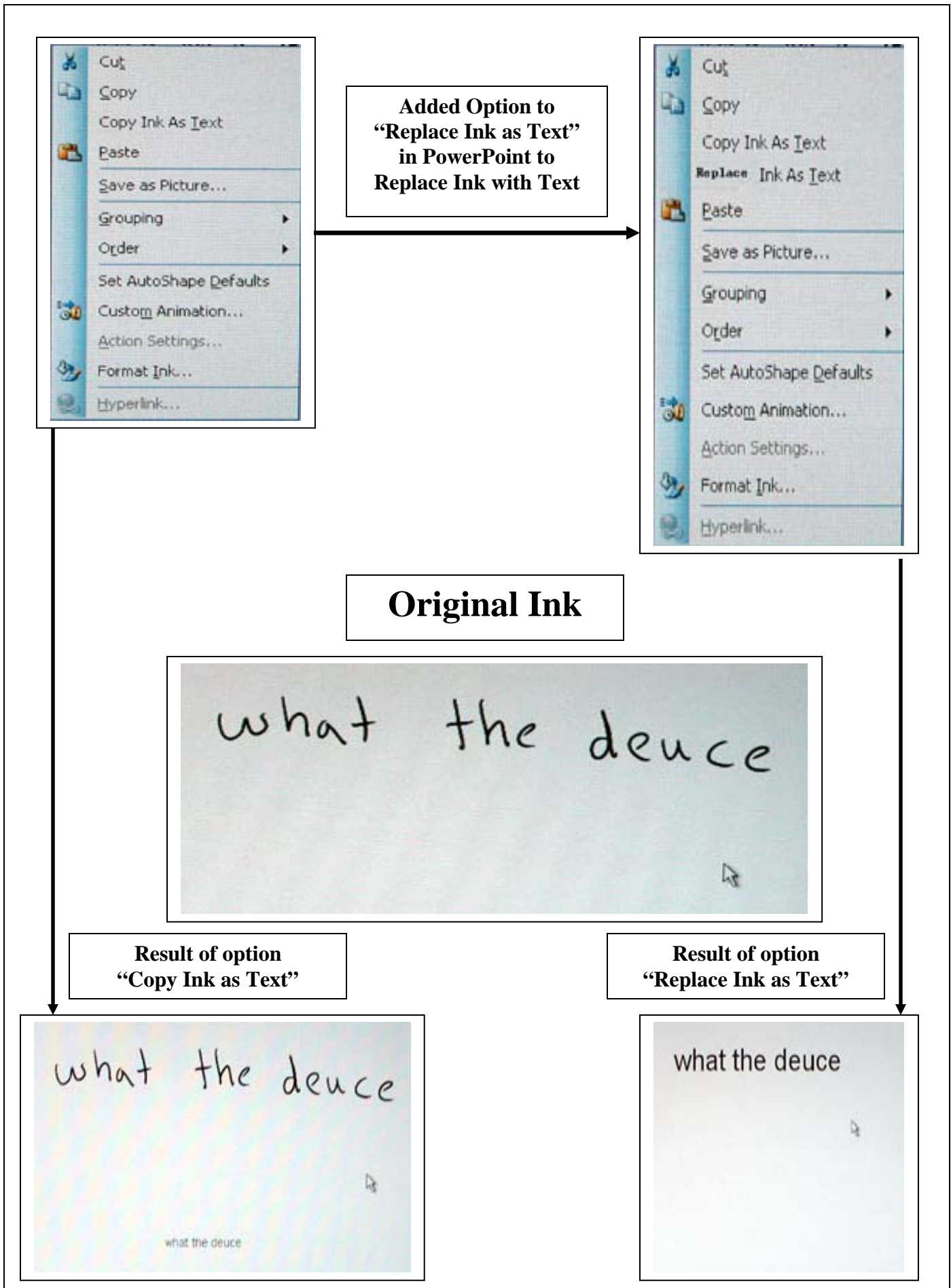


Figure 8: A conceptual idea for a new option to "Replace Ink with Text" in PowerPoint that appears in the right-click menu when using the "ink" feature to draw notes with the stylus.

Conclusions

- Many of the flaws we found with the tc4200 have been fixed in newer tablet models
 - Lenova Thinkpad
 - Choice of wording is very important in both the survey and the list of tasks
 - Leading questions only enforce initial opinions rather than encouraging new ones.
 - Believe that with the recommended changes implemented, the tablet PC can be an effective tool for teaching.
-
-

Questions

