



Table of Contents

Letter from the President	1
Core Updates	2
Upcoming events	2
Officer Announcements	3
Update on Global Relations	4
Letter from our SWE Advisor	5
Officer Contact List	6

A Letter from the President...

Hello SWE Members-

First off, I'd like to thank you all for such a successful year! This year we were able to involve more members, reach more K-12 students to get them interested in engineering, and launch our new sustainability and global initiatives!

As the year comes to a close, I'd also like to thank of all of officers, committee members, volunteers, and members. Your help is crucial in making all of our great programs and events possible. In addition, I'd like to congratulate the graduating seniors for their hard work and dedication throughout their time in college. There is lots more that you can do for SWE in your Professional Sections after graduation!

Once again, if there is anything you'd like to see SWE do, don't hesitate to contact me. Also, if you are interested in becoming a SWE officer next year, we welcome everyone! Thanks so much for a great year--have a wonderful summer!

Contact SWE

Office: Building 40 room 120
Phone: (805) 756-2417
Website: <http://swe.calpoly.edu/>

National website:
<http://www.swe.org>

Jessica Kiefer
jessicakiefer@gmail.com
(949) 636 – 9669



Core Updates

Community Outreach

First of all, I want to thank everyone who has helped us this past year with all of our outreach events (Building an Engineer Day, High School Shadow, and Girl Scout Day) and our philanthropy events (Thanksgiving Food Drive and Birthday Kit Drive). It really means a lot to all of us that you would take the time to help us help others! With your help over the past year, we have reached over 1,300 K-12 students!

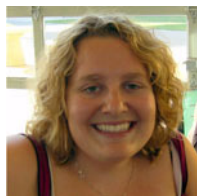
The outreach core still has a few events planned for the rest of the year! Both Building an Engineer Day and Relay for Life will take place on Saturday, May 16th.

Building an Engineer Day is a day where local junior high students are invited to Cal Poly to participate in hands-on labs to introduce them to engineering. It was such a huge success this past November that we've decided to host it again! We still need volunteers for helping in the labs, leading groups of students around, and to help throughout the day. If you're interested, contact Randi Shiromizu at rshiromizu@yahoo.com.

Relay for Life is a 24 hour walk hosted by the American Cancer Society to raise money for cancer research. The SWE team will be participating with dozens of other teams from Cal Poly to raise cancer awareness! If you are interested in joining the team, donating to our team, or want to walk for the SWE team, please contact Whitney Cole at wcole@calpoly.edu.

Once again, thank you to everyone who helped with our outreach events this year, and I hope that we will see you at these events Spring Quarter and next year!

Lesley Telford
VP of Outreach Events
ltelford@calpoly.edu



Upcoming Events

May

- 6th: General Meeting
Officer Elections!
- 14th: SWE Transition Event , 6:30 pm
PG&E Community Center
- 15th: Aeromech Industry Tour
- 16th: Relay for Life
Building an Engineer Day
- 20th: General Meeting
6 pm Sandwich Factory
Speaker: David Erickson from FM
Global
- 22th: PG&E Diablo Canyon Power Plant
- 29th : PXP Industry Tour

Officer Announcements

Upgrade for Professional Membership

All Graduating Seniors

Apply for a FREE professional membership upgrade!

- Please fill out the upgrade application form on the Cal Poly SWE website.
- Join the Facebook group Alumni of Cal Poly SWE to stay up to date with alumni events.

Plan to attend the transition event hosted by the San Luis Obispo professional section. There you will meet local professional members and see how a professional section operates and what benefits they can offer you!

Refreshments will be provided as well as FREE SWE mugs to attendees.

SWE Transition Event

6:30pm, Thursday, May 14, 2009

PG&E Community Center

6588 Ontario Road, San Luis Obispo

Erin M. Hambrick
Alumni Director
ehamb@calpoly.edu

Focus On Sustainability

Lionel Johnston, a retired Cal Poly construction worker, has helped numerous clubs on campus plant hundreds of trees on and off campus. Numerous times this year, he has helped Society of Women Engineers (SWE), plant almost 200 live oak and red wood trees on Stenner Creek Road and Bishops Road. Without him, this would not have been possible. Lionel grows, donates all of these trees, and installs drip systems to ensure that they survive. He volunteers his time nearly every weekend.

Courtney Ward
Sustainability Director
ceward@calpoly.edu

SWE Nationals

Every year around late October or early November Society of Women Engineers has their National Conference. Events start on Wednesday and run through Sunday. On Friday and Saturday they have a *huge* career fair for Collegiate and Professional members.

In addition they have many workshops on many different topics – how to work a career fair, how to get a job abroad, and many more. On Saturday night they have a banquet and awards ceremony. The collegiate sections find out who won the awards that they are applying for now.

It is great to see the depth in the SWE national organization. It is much bigger than what we do here at Cal Poly.

This coming fall **SWE Nationals will be in Long Beach, CA!** Since it is so close, it is great opportunity for more of Cal Poly SWE members to attend. If you are at all interested, I encourage you to check out what SWE Nationals can offer you. From personal experience, it has been a great event.

As next year's Region Collegiate Representative (RCR) one of my duties is to make sure the collegiate interests are addressed. I will be attending National Conference and I will be an active member in our SWE section. Please feel free to let me know if there is a topic you are interested in hearing more about.

Good Luck with the rest of Spring Quarter!

Katie Gage
Publications Director
kgage@calpoly.edu

An Update from Global Relations

Since January of 2008, SWE Officers Kendra Rowley and Lori Atwater have been researching and designing appropriate technologies for the impoverished communities of Malawi. In east Africa, Malawi is the 6th poorest country in the world and suffers chronic hunger seasons. Now called The Malawi Project, each quarter, Cal Poly students continue to investigate sustainable solutions that mitigate hunger, empower women and foster economic development in this land-locked, least developed country.

Kendra (CE) and Lori (GENE) began working on appropriate technologies in UNIV 491, a multidisciplinary course focused on designing and building devices for use in developing nations. They served on the Malawi Team sub-group that designed, fabricated and tested the first prototype pedal-powered irrigation pump. During the past quarters, Kendra took IME 400 independent study to continue her research on the appropriateness of the bike pump design for rural Malawi. Her research impacts the design of current prototypes being built by other students, specifically, the use of the rotary pump for improved flow rate.

In Summer, 2008, Lori led a team of 2 faculty and 5 students to Malawi. The bike pump prototype was demonstrated in 5 villages and left with a major water development NGO for assessment. The trip lasted 2 weeks and the team returned "without a paper cut". Meeting with village chiefs and women helped refine requirements for the revised design. This summer, Kendra, Lori and other students hope to travel to Malawi to test the latest irrigation pump prototype and discover more about building a pump factory in rural Malawi. Other charity projects include helping 350 orphans, building a permanent weir (irrigation dam) serving 6 villages) and food distribution for needy families.

The Malawi Project submitted a proposal to the Clinton Global Initiative University and expects to hear award results by May 30th. Donations are welcome. Checks made payable to CAL POLY with Malawi Project in the memo field are tracked as charitable contributions through University Advancement, these can be dropped of in the University Advancement office.

Upcoming Malawi Project Workshops:

SWE Building An Engineer Day, Saturday, May 16th 9:30am Engr IV (Bldg 192-220 or 222)

General Engineering Club of Cal Poly, Tuesday, May 19th 5:00pm Engr IV (Bldg 192-329)

Letter from the Women's Engineering Program Director/ SWE Advisor

Thanks to everyone for your participation supporting the Society of Women Engineers (SWE) and the Women's Engineering Program (WEP) this year. Your efforts, whether volunteering at a single event, leading a committee, or managing an officer position, are recognized and very much appreciated. I hope you also benefited from your experiences, developing leadership skills, improving your organization and time management skills, enhancing your technical skills, or making some new friends, working with SWE.

We enjoyed a very successful panel and department discussion during the Friday of Open House. The panel was well represented with collegiate members from several class levels and majors alongside professional female engineers representing several industries and disciplines as well. The session was well attended with ~ 50 prospective students and parents. Mark your calendar for next year! Additional collegiate participation would be well received by the attendees and give you an opportunity to 'talk up' your major!

I would like to encourage you to join and participate in SWE even if you have class Wednesday evenings when the general meetings take place. Attending meetings is great for information from our general speakers and networking with your peers, however, you can still be a SWE member and be involved without attending meetings. There are numerous Outreach events to volunteer for (either a few hours that day, or leading a planning committee), as well as Evening With Industry, and Team Tech just to name a few.

Additionally, the WEP has an Industry Advisory Board meeting twice a year. You are more than welcome to attend any part or all of the meeting. This quarters meeting is Friday, May 29th from 8am to 4pm in the ATL. This is a great opportunity for you to meet professional engineers and possibly even make a lasting contact for future job opportunities or mentoring.

Enjoy your summer. If you are evaluating career or educational choices or any other topics and would like to talk, I invite you to stop by the Women's Engineering Program office (building 40, room 119) to talk to me anytime. I can also be reached at: 756-2350 or krbangs@calpoly.edu.

Karen Bangs
Director Women's Engineering Program



Officer Contact List

President

Jessica Kiefer
jessicakiefer@gmail.com

Faculty Advisor

Karen Bangs
kbangs@calpoly.edu

Secretary

Selina Chang
schang@calpoly.edu

Treasurers

Ruth Huang
ruthchuang@gmail.com

Michael Gage

mgage@calpoly.edu

VP of College Relations

Beckie Holzer
beckieholzer@yahoo.com

AERO & ME

Boyee Wong
bswong@calpoly.edu

CE, ENVE

Christine Goiriz
cgoiriz@calpoly.edu

CSC, CPE, EE & SE

Stephanie Long
slong@calpoly.edu

BME, IME, MATE

Brandon Doo
bdoo@calpoly.edu

ARCE & BRAE

Ashley Hemping
ahemping@calpoly.edu

Santa Lucia/North Mtn. RA Rep.

Shelley Dangoor
sdangoor@calpoly.edu

Santa Lucia/North Mtn. Hall Rep.

Dayton Pickering
depicker@calpoly.edu

VP of Public Relations

Alyssa Daw
calpolyswe@gmail.com

Membership Director

Kyle Struthers
kstruthe@calpoly.edu

Alumni Director

Erin Hambrick
ehambric@calpoly.edu

Network Director

Nick Utschig
nutschig@calpoly.edu

Publications Director

Katie Gage
kgage@calpoly.edu

Historian

Jessica Sun
jessicaxsun@yahoo.com

Internal Marketing Director

Yuri Carrillo
ycarrill@calpoly.edu

VP of Outreach Events

Lesley Telford
ltelford@calpoly.edu

Education Outreach Director

Kendra Rowley
krowley@calpoly.edu

Career Outreach Director

Erin Stearns
estearns@calpoly.edu

Philanthropy Director

Whitney Cole
wcole@calpoly.edu

Outreach Assistant

Morgan Miller
gsmorning@comcast.net

VP of Corporate Relations

Melinda Hespen
mhespen@calpoly.edu

Corporate Relations Director

Lisa Rotty
lrotty@calpoly.edu

Corporate Marketing Director

Stephanie Smith
ssmith12@calpoly.edu

EWI Events Director

Jasmine Chandler
jazchandler@gmail.com

EWI Corporate Director

Amber Iraeta
airaeta@calpoly.edu

Career Development Director

Lacey Jones
lrjones@calpoly.edu

Professional Section Liaison

Brian Thompson
bathomps@calpoly.edu

Team Tech Lockheed Martin Directors

Nadia Shraibati,
Alan Tepe, & Brian Hill
cpteamtech@gmail.com

WDI Directors

Nate Hague & Eric Davis
cpneteamtech@gmail.com

VP of University Relations

Sabrina Bruce-Akman
sbakman@gmail.com

Social Director

Kayla McGinness
kmcguinness24@yahoo.com

Sustainability Director

Courtney Ward
ceward@calpoly.edu

Mentor Director

Randi Shiromizu
rshiromi@calpoly.edu

Diversity Director

Suzu Fernandez
azfernan@calpoly.edu

Open House/NEW Director

Laura Ashley Harris
lharri03@calpoly.edu

EmPOWER Poly Rep

Elaine Shreiber
erschrei@calpoly.edu

Global Relations Officer

Lori Atwater
latwater@calpoly.edu



Got a bright idea?

Share it with us!