



Table of Contents

Content	Page
Message from the President	1
Core Updates	2
Officer Articles	3
Message from WEP Director/SWE Advisor	4
Upcoming Events	4
Officer Contact List	5

Happy Holidays!

Contact SWE

Office: Building 40 room 120
 Phone: (805) 756-2417
 Website:
<http://swe.calpoly.edu/>

National website:
<http://www.swe.org>

A Message from the President...

This school year has really started off to a great start! We've had more members involved in our activities than ever before. We have **two** Team Tech teams working with Lockheed Martin and Walt Disney Imagineering. This year boasts the **largest** Big Sib/Little Sib mentoring program ever—with over 100 freshman engineers. SWE hosted its largest outreach event of the year: Building an Engineer Day. Over 230 students attended, completing 4 of 11 hands-on labs led by Cal Poly faculty and students. We had over 50 SWE volunteers on board to help out during the day. The event was generously sponsored by Raytheon, who was even able to send a representative (and fellow female engineer!) to help out and be the guest speaker. Cal Poly SWE also won **8** awards this year at National Conference, including Gold Collegiate Section, the highest recognition possible within the society. Congrats to all of our members, officers, advisors, and corporate sponsors for making this possible!

As you read through this newsletter, I'm sure you will be able to find something that interests you! Don't hesitate to email someone and **get involved**. There are many great opportunities waiting for you—and chances are you will be able to make some great new friends in the process. Feel free to email me if you have any suggestions for the club—we'd love to hear from you!

Jessica Kiefer
 SWE President
jessicakiefer@gmail.com



Core Updates

Corporate Relations

This past fall quarter we were fortunate enough to have the opportunity to interact with a wide array of industry representatives. Speakers from Plains Exploration and Production, and Shopatron, Inc. spoke about “Career Changes” and what a career with Shopatron can offer. Each speaker shared their experiences as a college student, entering the workforce, changing positions within a company, changing companies, and even changing careers. We learned about choices they wish they made and choices they wouldn’t change. They also described what their specific company specializes in and ways to find the ideal career of your choice. Winter quarter is full of these same opportunities. Speakers from Amazon.com, Cisco, UPS and Accenture will attend meetings on campus. I hope to see all of you at our upcoming meetings so that you can benefit from each speaker.



Lisa Rotty
Corporate Relations Director
lrotty@calpoly.edu

Outreach Events

This core is responsible for coordinating all of our section’s outreach events. During fall quarter we held a huge outreach event- Build an Engineer day. There were over 200 young students here. Thank you to all the people that volunteered! We have numerous events planned during winter quarter. Keep looking at the SWE mail for details!

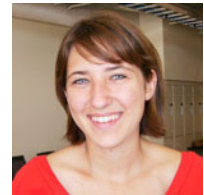


Lesley Telford
VP of Outreach Events
ltelford@calpoly.edu

Public Relations

The Public Relations core is responsible for getting the information out about all of SWE's events and opportunities. We are in charge of the weekly SWEmail emails, the Cal Poly SWE website (www.swe.calpoly.edu - check it out!), the newsletter, the facebook group, and more. This year, one of our main goals is to minimize the amount of paper we use by coming up with other creative ways to advertize.

You can help out by giving us new ideas for publicity! You can also get involved in our core by signing up to be on the membership committee. We're looking for people to get the word out about SWE to freshmen in the dorms. If you would like to help out in any way, please send us an email.



Alyssa Daw
VP of Public Relations
calpolyswe@gmail.com

College Relations

The College Relations Core is responsible for being the liaison between SWE and the students. We host socials in the dorms to spread the word about SWE and our upcoming events. We also promote meetings to each of the engineering departments. Each major chair within the core is assigned to 2 or 3 engineering departments. The main responsibility of each major chair is to organize industry tours for the majors that they represent.



Rebecca Holzer
VP of College Relations
rholzer@calpoly.edu

Officer Articles

Evening With Industry

Want to land an amazing internship or job? Here's your chance to socialize and have dinner with industry reps from major engineering companies!

What: Evening with Industry (EWI) is SWE's annual banquet, where representatives from many companies attend to meet Cal Poly's engineers! In addition to dinner, there is an awards ceremony for scholarship winners, Outstanding Women in Engineering, and Most Supportive Professors.

When: 6:00p.m., Thursday, January 29

Where: Embassy Suites (rides will be available)

How: Sign up at the January 14 General meeting. If you miss the meeting, come to the SWE office. Tickets cost \$10 for members \$30 for non-members (SWE membership included in price).

Amber Iraeta & Jazmyn Chandler
Evening with Industry Directors
airaeta@calpoly.edu, jazchandler@gmail.com

EWI Scholarships

Apply for scholarships that are presented at EWI on the SWE website (www.swe.calpoly.edu)! The applications are simple and the scholarships are available to a variety of majors and class levels. Applications are **due on-line on January 7**.

Check website for updates on scholarships and contact me with any questions.

Melinda Hespen
VP of Corporate Relations
mhesper@calpoly.edu

Advance

SWE on Sustainability

Members of SWE learned that they can make a difference when they met on a Saturday morning to plant trees. Together, SWE was able to plant 52 trees on the Cal Poly campus. This accomplishment encouraged members to become more active in the future, engaging in activities such as building an enclosure for a greenhouse or educating themselves on good recycling habits.

Now that SWE is a member of the Poly Coalition, we are more involved with other sustainability activity opportunities. Members of SWE are much more interested in making a difference and being as sustainable as possible.

Courtney Ward
Sustainability Director
ceward@calpoly.edu

Team Tech 2007-2008 Stryker Endscopy

Congratulations to Team Tech! Your hard work paid off and the Team placed 2nd at this years National Conference. Thank you to everyone who helped to make the project a success. Best of luck to the new teams with Lockheed Martin and Walt Disney Imagineering, keep up the great work.

Katie Gage
2007-2008 Team Tech Director
kgage@calpoly.edu

Aspire

Achieve

A Message from Women's Engineer Program Director/SWE Advisor:

I hope that Fall Quarter and finals went well for you and that you are enjoying your winter break. If the quarter was a little more challenging than you expected you are in good company because you are studying with the best of the best here at Cal Poly. Don't be discouraged! Help is available, through the advising office, your instructors, tutoring through several departments, your big sib in SWE, SWE officers, and your classmates, just to name a few. As a Cal Poly engineering graduate your opportunities for a prestigious, challenging career in which you can improve people's lives are incredible! And did you know the average starting salary for a Cal Poly College of Engineering graduate was between \$55,000 and \$60,000 last year?!

I encourage you take advantage of the programming that the Society of Women Engineers and the Women Engineering Program offer, especially if you are interested in learning about or expanding your career options. We are here along with the College Advising Center and Career Services to help you find and follow the career path that is right for you. Attend our general meetings and hear speakers from a variety of industries and engineering disciplines.

If you have been thinking about joining or re-joining SWE, now is a great time to do so – **we need you!** We are planning some of our biggest events of the year, including our annual Evening With Industry banquet on January 29th, the 2nd Build An Engineer event of the year, Girl Scout Day and 4th grade outreach activities. We also have numerous plant tours (HP, PG&E at Diablo Canyon to name a few). Additionally there are many scholarship and leadership opportunities at the local and National level available for you to take advantage of as a member of SWE. We also have sustainability and global engineering focuses this year.

I look forward to a great quarter and hope to see you soon. If you are evaluating career or educational choices or any other topics and would like to talk, I invite you to stop by the Women's Engineering Program office (building 40, room 119) to talk to me anytime. I can also be reached at: 756-2350 or krbangs@calpoly.edu.

Karen Bangs
Director Women's Engineering Program
krbangs@calpoly.edu



Advance

Aspire

Achieve

Upcoming Events

January

- 14th: First Meeting of the Quarter!
EWI Sign-ups
Speaker: Dawn Carter and Zoanna Jones from Amazon.com
- 16th: Hewlett Packard Industry Tour
- 28th: General Meeting
Speaker: Niki Baccam from Cisco
- 29th: Evening with Industry
6-9 pm Embassy Suites
- 30th-31st: Region B Conference
Albuquerque, New Mexico

February

- 11th: General Meeting
Speaker: Jennifer Harris
UPS West Los Angeles District
- 13th: Parker Aerospace Industry Tour
- 25th: General Meeting
Accenture
- 27th: Edwards Lifescience Industry Tour

Officer Contact List

President
Jessica Kiefer
jessicakiefer@gmail.com

Faculty Advisor
Karen Bangs
kbangs@calpoly.edu

Secretary
Selina Chang
schang@calpoly.edu

Treasurers
Ruth Huang
ruthchuang@gmail.com

Michael Gage
mgage@calpoly.edu

VP of College Relations
Beckie Holzer
beckieholzer@yahoo.com

AERO & ME
Boyee Wong
bswong@calpoly.edu

CE, ENVE
Christine Goiriz
cgoiriz@calpoly.edu

CSC, CPE, EE & SE
Stephanie Long
slong@calpoly.edu

BME, IME, MATE
Brandon Doo
bdoo@calpoly.edu

ARCE & BRAE
Ashley Hemping
ahemping@calpoly.edu

Santa Lucia/North Mtn. RA Rep.
Shelley Dangoor
sdangoor@calpoly.edu

Santa Lucia/North Mtn. Hall Rep.
Dayton Pickering
depicker@calpoly.edu

VP of Public Relations
Alyssa Daw
acdaw@calpoly.edu

Membership Director
Kyle Struthers
kstruthe@calpoly.edu

Alumni Director
Erin Hambrick
ehambric@calpoly.edu

Network Director
Nick Utschig
nutschig@calpoly.edu

Publications Director
Katie Gage
kgage@calpoly.edu

Historian
Jessica Sun
jessicaxsun@yahoo.com

Internal Marketing Director
Yuri Carrillo
ycarrill@calpoly.edu

VP of Outreach Events
Lesley Telford
ltelford@calpoly.edu

Education Outreach Director
Kendra Rowley
krowley@calpoly.edu

Career Outreach Director
Erin Stearns
estearns@calpoly.edu

Philanthropy Director
Whitney Cole
wcole@calpoly.edu

Outreach Assistant
Morgan Miller
gsmorning@comcast.net

VP of Corporate Relations
Melinda Hespen
mhespen@calpoly.edu

Corporate Relations Director
Lisa Rotty
lrotty@calpoly.edu

Academic Director
Nadya English
ndenglis@calpoly.edu

Corporate Marketing Director
Stephanie Smith
ssmith12@calpoly.edu

EWI Events Director
Jasmine Chandler
jazchandler@gmail.com

EWI Corporate Director
Amber Iraeta
airaeta@calpoly.edu

Career Development Director
Lacey Jones
lrjones@calpoly.edu

Professional Section Liaison
Brian Thompson
bathomps@calpoly.edu

Team Tech Lockheed Martin Directors

Nadia Shraibati,
Alan Tepe, & Brian Hill
cpteamtech@gmail.com

WDI Directors

Nate Hague & Eric Davis
cneteamtech@gmail.com

VP of University Relations
Sabrina Bruce-Akman
sbakman@gmail.com

Social Director
Kayla McGinness
kmcguinness24@yahoo.com

Sustainability Director
Courtney Ward
ceward@calpoly.edu

Mentor Director
Randi Shiromizu
rshiromi@calpoly.edu

Diversity Director
Suzy Fernandez
azfernan@calpoly.edu

ESC/Interclub Council Rep
Mona Barjasteh
mbarjast@calpoly.edu

Open House/NEW Director
Laura Ashley Harris
lharris03@calpoly.edu

EmPOWER Poly Rep
Elaine Shreiber
erschrei@calpoly.edu

Global Relations Officer
Lori Atwater
latwater@calpoly.edu



Got a bright idea?

Share it with us!